

Job Name/Location:

Tag No:

Date:

For: File Resubmit

PO No.:

Approval Other _____

Architect:

GC:

Engr:

Mech:

Rep:

(Company)

(Project Manager)



PMBD3630

Three-Port Branch Distribution Unit

Performance:

Max. Nominal Port Capacity (Btu/h) (each port)	24,000
Max. Nominal Unit Capacity (Btu/h) (sum of ports)	72,000
Connected Indoor Unit Capacity (Btu/h)	7,000 ~ 24,000
Power Input (W)	24

Electrical:

Power Supply (V/Hz/Ø)	208-230/60/1
Rated Amps (A)	0.12

Piping:

Piping Connections to Outdoor Unit:

Liquid Line (in., O.D.)	Ø3/8
Vapor Line (in., O.D.)	Ø3/4

Piping Connections to Indoor Unit:

Liquid Line (in., O.D.)	Ø1/4 x 3
Vapor Line (in., O.D.)	Ø3/8 x 3

Features:

- Distributes refrigerant to indoor units
- Internal components are insulated
- Flare joints provided for easy installation
- Compact design

Operating Range:

Temperature Range (°F DB)	0 ~ 150
Maximum Humidity	80%

Unit Data:

Net Weight (lbs.)	14.3
Shipping Weight (lbs.)	17

Notes:

1. Acceptable operating voltage: 187V-253V.
2. All communication / power (connection) cable must be a minimum of 14 AWG, 4-conductor from the outdoor unit to the branch distribution unit; 14 AWG, 4-conductor from the branch distribution unit to the indoor unit; stranded, shielded or unshielded (if shielded, it must be grounded to the chassis of the outdoor unit only); and must comply with applicable local and national codes.
3. Piping lengths:
 - Maximum height difference between branch distribution unit and indoor units - 32.8 feet.
 - Maximum height difference between branch distribution unit and branch distribution unit - 49.2 feet.
 - Maximum piping length between branch distribution unit and indoor units - 49.2 feet.
4. The branch distribution unit should be installed inside of a building.
5. Must follow installation instructions in the applicable LG installation manual.
6. Power wiring cable size must comply with the applicable local and national codes.



PMBD3630

Three-Port Branch Distribution Unit



Tag No.: _____

Date: _____

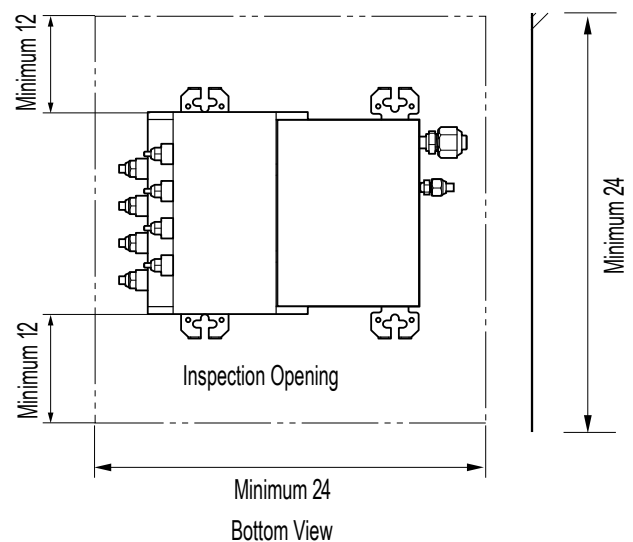
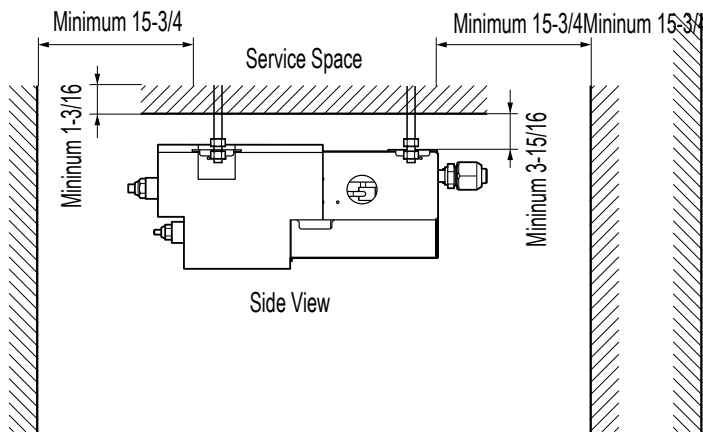
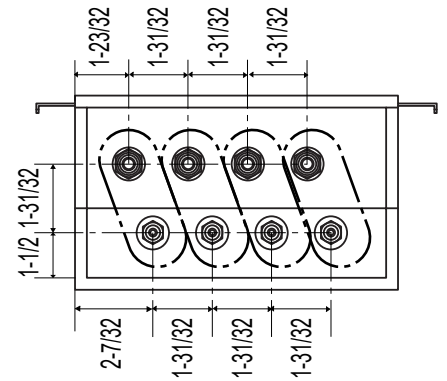
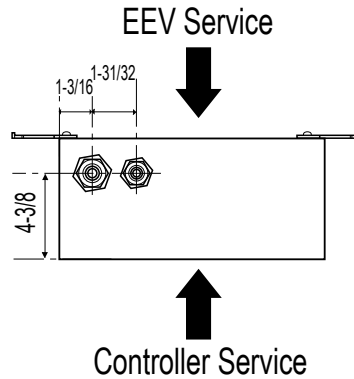
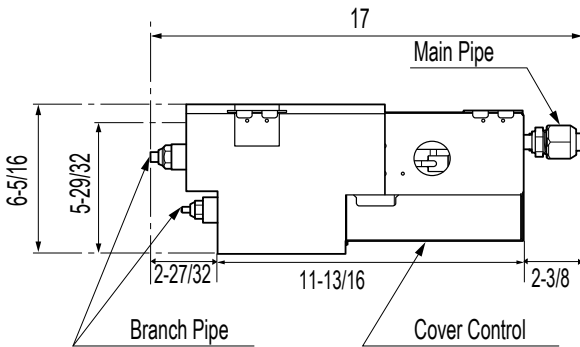
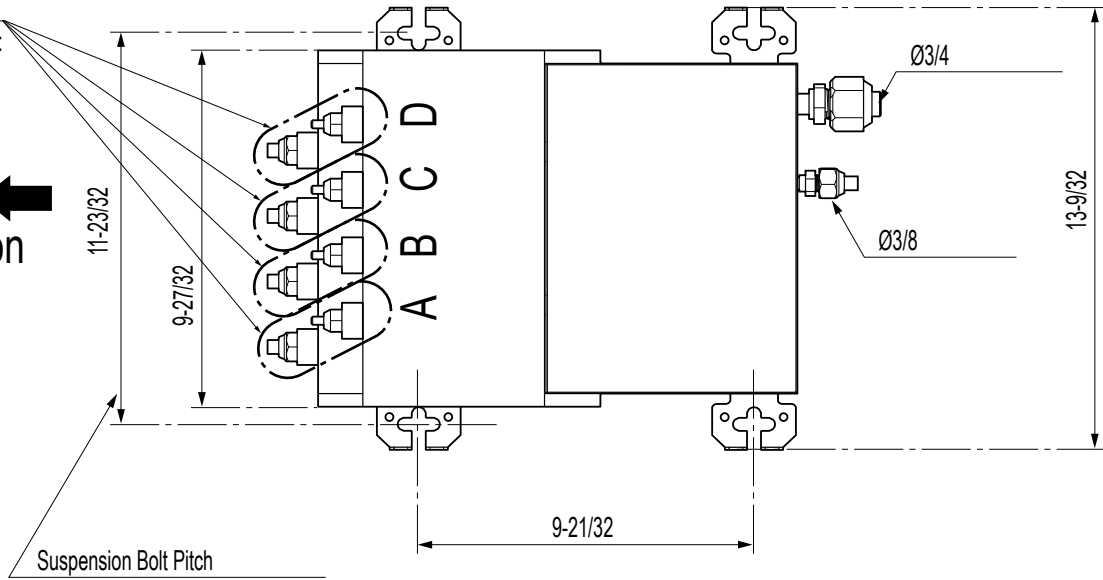
PO No.: _____

A-C (and PMBD3640 D) Connections:
Liquid Pipe Ø1/4
Gas Pipe Ø3/8

PMBD3641 D Connections:
Liquid Pipe Ø1/4
Gas Pipe Ø1/2

Indoor Unit
Piping Direction ←

Unit: Inch



Notes:

1. For PMBD3620 Unit, Ports A and B are Available.
2. For PMBD3630 Unit, Ports A, B, and C are Available.
3. For PMBD3640 and PMBD3641 Units, Ports A, B, C, and D are Available.